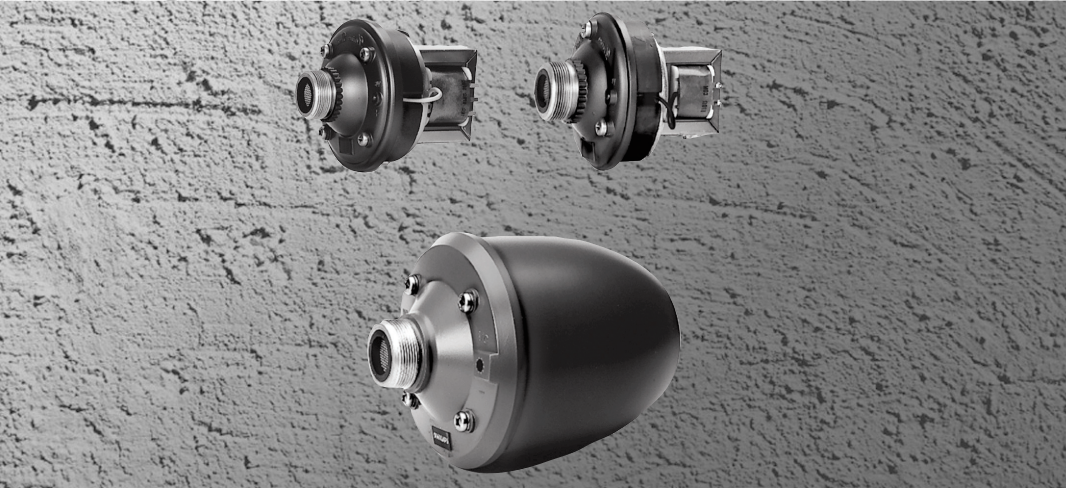


LBN 9000/00, LBN 9001/00 and LBN 9003/00 Driver Units



Security Systems



- High efficiency
- 15 W, 30 W and 50 W versions
- 1 3/8" screw thread
- Simple power setting
- Complies with international installation and safety regulations

The Bosch professional horn loudspeaker system comprises a range of three high-efficiency driver units that can be installed into one of the compatible circular and rectangular horns (supplied separately without drivers). A standard 1 3/8" screw thread is used for mounting the drivers into horns. All models are treated against corrosion.

System Overview

The LBN 9000/00 is a 15 W driver unit and the LBN 9001/00 is a 30 W driver unit. Connections to 100 V lines are made using push-on spade terminals.

The LBN 9003/00 is a more powerful 50W model.

Connections to 100 V lines are made using screw terminals.

Note: The 50 W driver cannot be used in horns where the line/loudspeaker supervision board is installed.

Functions

All driver units include a matching transformer to allow power tapping. See circuit diagram overleaf. This feature also allows impedance matching for different amplifier types.

A range of horns is available for these driver units to allow tailor-made solutions for a variety of sound reinforcement applications. Three circular types (LBC 3403, LBC 3404 and LBC 3405 with diameters of 255, 380 and 510 mm respectively) and one rectangular type (LBC 3406, measuring 380 x 205 mm) are available. They are made from flame retardant, high-impact Polystyrene (PS) material for high strength and low weight, and are finished in light grey. A sturdy steel mounted bracket is also supplied. See separate datasheet.

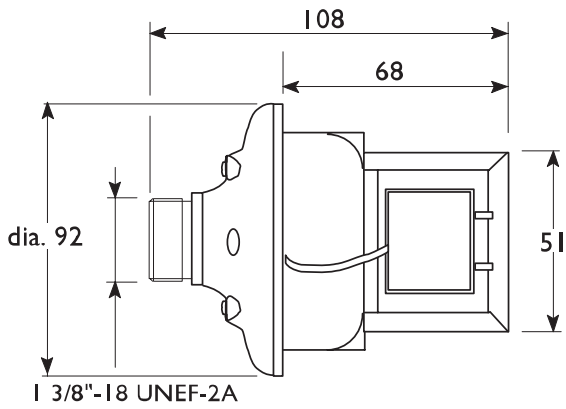
BOSCH

Certifications and Approvals

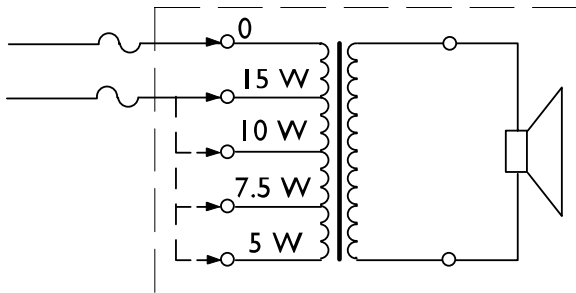
All Bosch loudspeakers are designed to withstand operating at their rated power for 100 hours in accordance with IEC 268-5 Power Handling Capacity (PHC) standards. Bosch has also developed the Simulated Acoustical Feedback Exposure (SAFE) test to demonstrate that they can withstand two times their rated power for short durations. This ensures extra reliability under extreme conditions, leading to higher customer satisfaction, longer operating life, and much less chance of failure or performance deterioration.

Installation/Configuration Notes

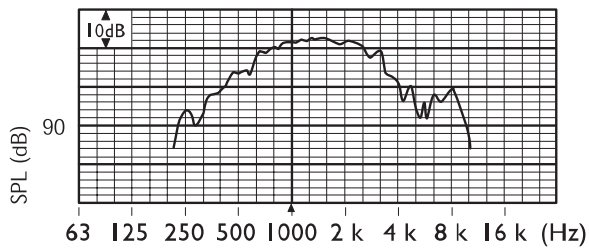
LBN 9000/00



Dimensions (in mm)

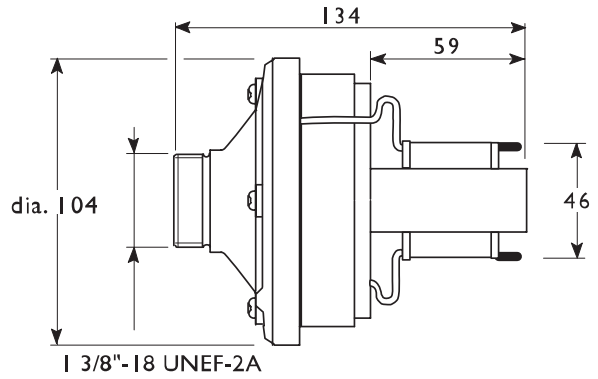


Circuit diagram

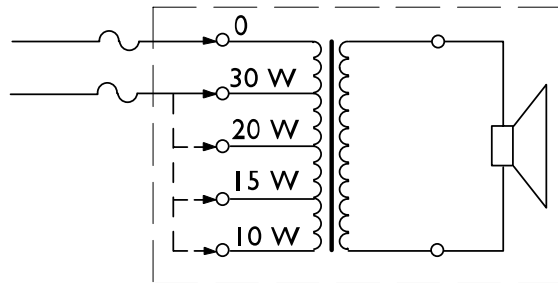


Frequency response

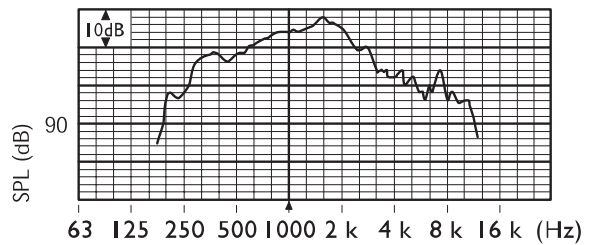
LBN 9001/00



Dimensions (in mm)

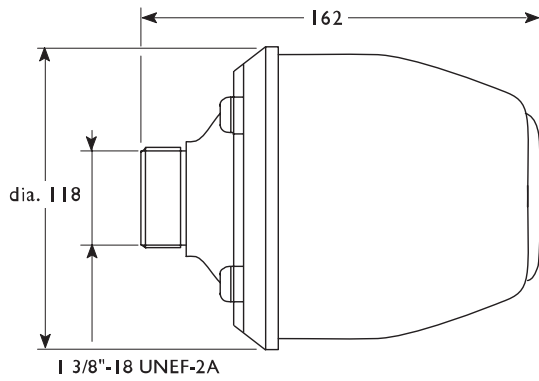


Circuit diagram

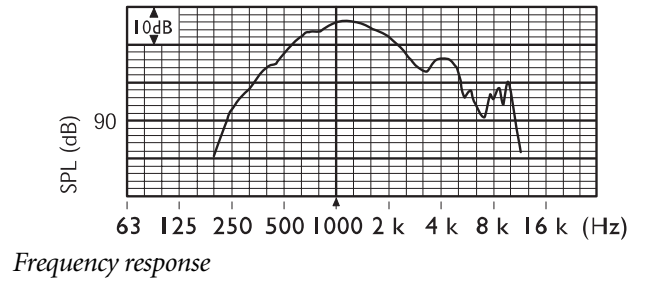


Frequency response

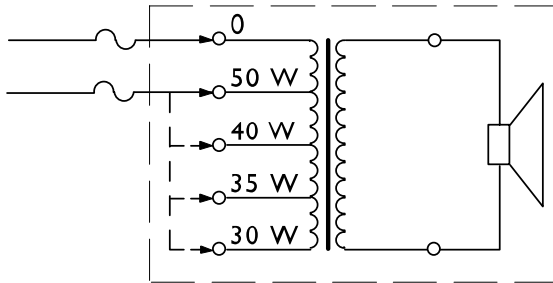
LBN 9003/00



Dimensions (in mm)



Frequency response



Circuit diagram

Ordering Information

Model & Description

LBN 9000/00 Driver Unit, 15 W

100 V, 22.5 / 15 W max / rated power (PHC)

LBN 9001/00 Driver Unit, 30 W

100 V, 45 / 30 W max / rated power (PHC)

LBN 9003/00 Driver Unit, 50 W

100 V, 75 / 50 W max / rated power (PHC)

Hardware Accessories

LBC 3403/15 Horn, Circular, 10" without Driver

diameter = 255 mm

LBC 3404/15 Horn, Circular, 15" without Driver

diameter = 255 mm

LBC 3405/15 Horn, Circular, 20" without Driver

diameter = 380 mm

LBC 3406/15 Horn, Rectangular, 8 x 15" without Driver

diameter = 510 mm

Americas:

Bosch Security Systems
130 Perinton Parkway
Fairport, New York, 14450, USA
Phone:+1 (0) 585 223 4060
Fax:+1 (0) 585 223 9180
security.sales@us.bosch.com
<http://www.boschsecurity.us>

Europe, Middle East, Africa:

Bosch Security Systems B.V.
P.O. Box 80002
5600 JB Eindhoven, The Netherlands
Phone:+31 (0) 40 27 83955
Fax:+31 (0) 40 27 86668
emea.securitysystems@bosch.com
<http://www.boschsecurity.com>

Asia-Pacific:

Bosch Security Systems Pte Ltd
38C Jalan Pemimpin
Singapore 577180
Phone:+65 6319 3450
Fax:+65 6319 3499
apr.securitysystems@bosch.com
<http://www.boschsecurity.com>

BOSCH